



BRIDGING THE FUTURE

Delivering reliable, safe, green and sustainable world class solutions

COMPANY PROFILE

XMT TECHNOLOGIES SDN. BHD. (531914-T)

Suite 2A-17-2, Plaza Sentral, Jalan Stesen Sentral 5, KL Sentral, 50470 Kuala Lumpur, Malaysia

T +603 2773 5600 F +603 2780 5700 W www.xmt.com.my E info@xmt.com.my

EXECUTIVE CHAIRMAN'S MESSAGE

“In a world where technology is rapidly changing, XMT, as one of the leading telecommunications and ICT companies, is committed to provide creative, quality, and cost-effective solutions for your organisation.

XMT is progressing from a nascent limb of one of Malaysia's leading conglomerates to an independent industry leader since 2000. With our experience, we will continue to deliver reliable, safe, green and world-class solutions to ensure efficiency, growth, and sustainability.

In the ever-competitive business environment, we will take on the responsibility to align our innovative solutions to meet your organisational priorities. To do so, we will always be reinventing ourselves so as to be your preferred technology enabler.

After all, our vision is bridging the future.

DATO' RAMLI KALAM
EXECUTIVE CHAIRMAN



ABOUT US



Date Incorporated: 14 November 2000

Authorised Capital: RM 10 Million

Paid-up Capital: RM 6.5 Million

Banks: Bank Islam, Maybank,
RHB Islamic, SME Bank

Auditor: Wan Nadzir & Co.

Tax Agent: PricewaterhouseCoopers (PwC) Taxation

XMT TECHNOLOGIES SDN. BHD. (531914-T)

Suite 2A-17-2, Plaza Sentral
Jalan Stesen Sentral 5, KL Sentral
50470 Kuala Lumpur, Malaysia

T +603 2773 5600

F +603 2780 5700

W www.xmt.com.my

E info@xmt.com.my

OUR MANAGEMENT



NUR ZAKRI ZAKARIA
CEO & DIRECTOR

Nur Zakri has served for 30 years in the field of Education (IT), ICT and Telco, involving the pioneering of various ICT-related projects. He graduated with a BSc in Computer Science (Iowa, USA) and a MSc in Computer Science (Kentucky, USA).



LATIPAH MOHD SANI
COO & DIRECTOR

Latipah possesses over 20 years' experience in project management for engineering and ICT projects. She is also a member of the Board of Engineers Malaysia (BEM) and graduated with a BEng (Hons) Electronics & Computer Engineering (Birmingham, UK).



OUR CREDENTIALS

BRIDGING THE FUTURE is what we do

The focus of XMT includes Information and Communications Technology (ICT) & Telecommunications Services, Managed ICT Services, and Managed Infrastructure ICT. We have the resources and the capabilities to undertake projects of all sizes, while our professional project teams ensure the quality, timeliness and cost effectiveness in project deliveries.

We are members in good standing with these various organisations as we have one aim in mind – to deliver projects, ensuring you and your business operate efficiently and compete effectively with products and services of the highest reliability, security, and efficiency.



BUMIPUTERA



MINISTRY OF WORKS

BPKU



G7



ASP, NFP and NSP



ISO 9001



**ISO 27001: 2013
Cert. No.: 774877**



OUR JOURNEY

TERAS Syarikat Bumiputera Berprestasi Tinggi

Listed as the 1,000th TERAS company

2016



MoU Signing, officiated by YB Minister of Youth & Sports

2015



1st Malaysian Platinum Green Building

2010



MSC & ASP Licences

2007



Diversified into Utilities & Transportation

2005



2017

Received ISO 27001:2013



2015

NFP/NSP Licences



2014

Management Buyout



2009

Diversified into Oil & Gas



2006

Launched of Malaysia's 1st Broadband and Voice over IP (VoIP) utility service



2004

Signing of MoU, witnessed by the YAB Prime Minister

OUR VISION

Bridging the Future

OUR MISSION

To be the preferred technology enabler
delivering reliable, safe, green and sustainable
world-class solutions

OUR CORE VALUES

Committed

- We treat your business like our own
- We are committed to our promises to our customers, partners and colleagues

Respect

We respect our customers, partners & colleagues' beliefs, needs and preferences

Timely

- We plan ahead
- We meet deadlines
- We are punctual & disciplined
- We deliver the most efficient products & services to suit our clients' needs

Integrity

- We adhere to laws & company procedures
- We avoid conflicts of interest
- We are ethical & morally guided

Creative

- We think out of the box
- We give viable & suitable solutions
- We provide alternatives & options



The background is a dark blue gradient. Overlaid on this are numerous thin, glowing light blue lines that form a complex, interconnected network resembling a circuit board or a data flow diagram. These lines are mostly horizontal and vertical, with some diagonal segments. At various points where lines intersect or terminate, there are small, solid blue circles of varying sizes, some of which appear to be glowing with a soft light. The overall effect is one of high-tech, digital connectivity.

OUR SOLUTIONS & PRODUCTS

OUR SOLUTIONS & PRODUCTS



COMMUNICATIONS

Empowering you to effectively control your business using our high quality, reliable and secure communications solutions

INFRASTRUCTURE ICT

Providing intelligent buildings, highways, railways with future proof, cost effective, and state of the art technologies



ICT SERVICES

Equipping your business with Information and Communications Technology and Telecommunications services to ensure you stay competitive in today's digitally charged marketplace





Internet of Things (IoT) Communications

Random Phase Multiple Access (RPMA) is a combination of state of the art technologies designed specifically and exclusively for wireless machine-to-machine communication.

RPMA uses the globally available 2.4 GHz license-free band making the global market available to your devices with only a single design. RPMA coverage penetrates underground, through concrete, and inside dense buildings providing coverage. The technology provides wider reliable coverage, more capacity and scalability, customer-proven longer battery life, and decades of network longevity.

With RPMA technology, the security of your business is guaranteed via:

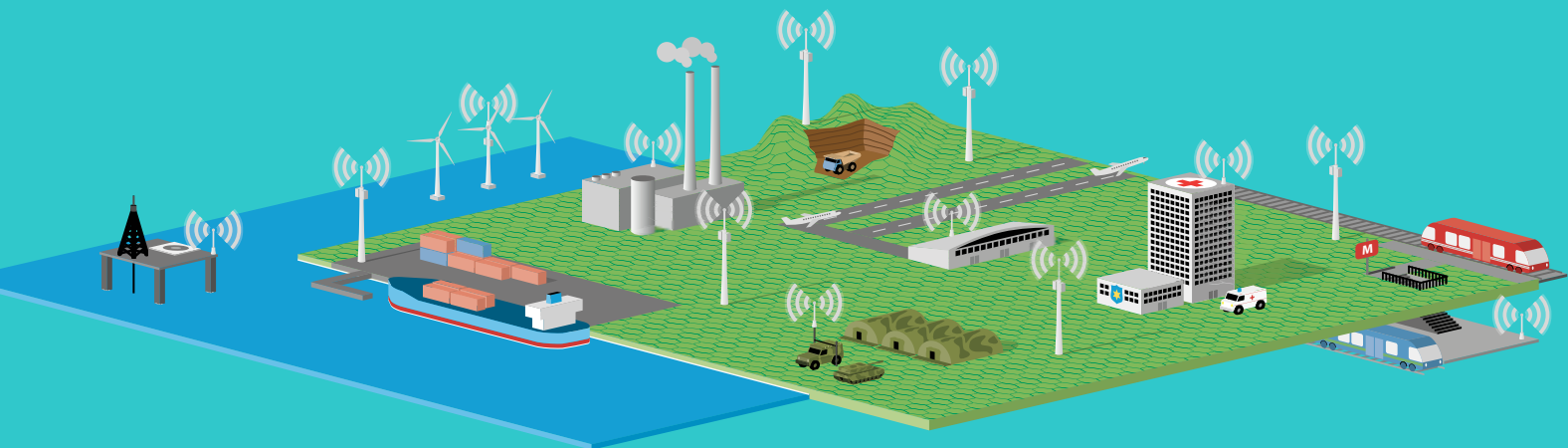
- **Mutual Authentication**
Only the right nodes connect to the right networks
- **Message Authentication**
Messages comes from authentic machine
- **Message Confidentiality**
Encryption of messages
- **Device Anonymity**
Endpoint ID are never exposed
- **Authentic Firmware Upgrade**
Installation of real firmware
- **Secure Multicast**
Secure communications to multi-devices simultaneously

RPMA Solutions cover industries like:

- **Smart Parking**
- **Smart Metering**
- **Smart Grid**
- **Street Lighting**
- **Smart Agriculture**
- **Environmental Monitoring**
- **Waste Management**

RPMA





Digital Radio Infrastructure System

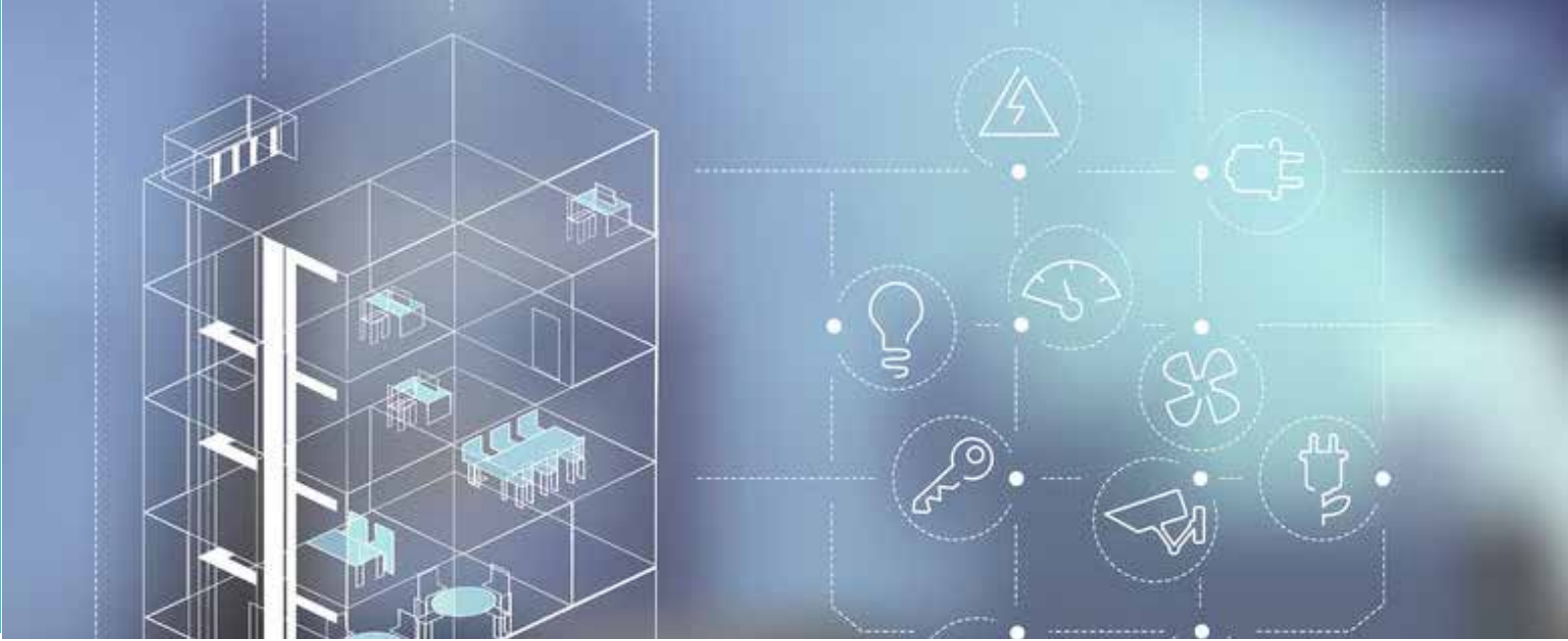
For the best in professional radio communications, XMT gives you TetraFlex® Systems.

With a decentralised and flexible network with rich applications, TetraFlex® Systems are fully scalable, flexible and reliable. Utilising 100% IP-based technology with the simplest plug-and-play application, TetraFlex® Systems are powerful for critical radio and broadband communication for utilities, oil and gas, airports, mining, outdoor and indoor base stations, applications and gateways.

The Rapid Deployable TetraFlex (RDT) is a fully featured preconfigured mobile TETRA system is particularly effective in emergency situations like road accidents, natural disasters or search and rescue operations in remote and rural areas. RDT can be easily transported to where it's needed and made fully operational almost instantly - regardless of whether there is any existing network in the area.

- Multi-Technology presenting the world's first outdoor base station featuring 4 technologies in one box; TETRA, DMR Tier III, TEDS and Analog.
- Multi-Frequency extending coverage by supporting VHF and UHF mode in all technologies.
- Multi-Carrier providing a flexible, cost-efficient solution by enabling up to 4 carriers in one box, and even combining multiple technologies in one box.
- Simulcast available for DMR and Analog, and repeater functionality for TETRA and TEDS.





Property, Asset & Facility Management System

In managing real estate (buildings, infrastructures etc), movable assets (plants, technical elements, furniture etc), and the related maintaining (scheduled, meter-based and breakdown) logistics and economic activities, you would need a system to know, organize, and update all the information to support and ease in decision-making and operational activities.

We provide you with a ready-to-use solution, already configured necessary archives, workflows, reports and dashboards.

Xpremise include:

- **Space & Asset Inventory**
- **Facility Management**
- **Logistics Management**
- **Economic Management**
- **Energy & Environment**
- **Geographic Information System (GIS)**
- **Building Information Modeling (BIM)**





Managed Communications Services

XMT empowers your business with ICT and Telecommunications services to ensure you stay competitive in today's digitally charged marketplace. XMT offers:

- **Dedicated Internet Access**
- **Managed LAN and WAN**
- **Managed Unified Communication**
- **Managed Fiber**
- **Managed Data Centre – IaaS, PaaS, SaaS**
- **Cloud Services**
- **24x7x365 Technical Support**

With the perpetually evolving telecommunications landscape, XMT's managed services portfolio is developed to provide you with a wide range of managed services model that are in line with the rapid transformation of the global telecommunication demands and needs. XMT has set their sights on not just managing technology and networks but on managing service performance and ultimately your experience.

We deliver to you, via our Xkomm Managed Services, our ongoing management, monitoring and maintenance of your IT networks hence securing your ICT & Telecommunications assets.





Customer Care Management System (CCMS)

CCMS is designed to help businesses manage:

- **Customer Data**
- **Access Business Information**
- **Customer Support**
- **Clients and Contacts**
- **Support Vendor / Partner Relationships**
- **Employees**
- **Knowledge and Training**
- **Assets or Resources**

With cloud-based CCMS - SaaS (software-as-a-service) or on-demand CCMS - data is stored on an external, remote network that you can access anytime via internet connection.





Traffic Control and Surveillance System (TCSS)

For effective traffic management, XMT delivers the most comprehensive and extensive TCSS platform which includes traffic management, monitoring, data analysis and control activities.

To maximize the capacity of road network and enhance road safety, XMT makes available the deployment of an advanced, operational TCSS system to overcome complexities in traffic operations and management in both routine and emergency cases.

For complete TCSS, XMT offers:

- **Traffic Control System (TCS)**

TCS comprises two main components as below:

- **Variable Message Signs (VMS)**

The primary function of the VMS is to provide travelling time and other information to motorists on any abnormal traffic situation ahead.

- **Highway Information System (HIS)**

The primary function of the HIS is to provide travelling time and other information to motorists on any abnormal traffic situation ahead.

- **Traffic Information System (TIS)**

- **Automatic Number Plate Recognition System (ANPR)**

- **Automatic Vehicle Detection System (AVDS)**

- **Closed-Circuit Television (CCTV)**

- **Traffic Monitoring System (TMS)**

- **Emergency Telephone System (ETS)**





Integrated Security Management System (ISMS)

Integrated Security Management System (ISMS) is state of the art software modular in design and flexible for future expansion. It integrates all security components permitting programmed control and information gathering. ISMS provides the daily operation platform for operators, maintenance, security and safety.

Integrated Security Management Systems shall include the following subsystems such as:

- **Security System**
- **Access Control System (ACS)**
- **Intruder Alarms System (IAS)**
- **CCTV and Video Monitoring (CCTV)**
- **Intercom System (IS)**
- **Perimeter Intrusion Detection System (PIDS)**
- **Panic Alarm System**
- **Guard Tour System**
- **Biometrics System**
- **Facial Recognition**
- **Crowd Control**





Integrated Building Management Systems (IBMS)

We provide fully Integrated Building Management System (IBMS), incorporating distributed control and standard open communication networks. The integrated systems include controls and monitoring of each building/room/apartment.

- **Building Management**
 - Building Automation
 - Lighting Controls
 - Consumption Measurements
- **Security System**
 - Access Control
 - Intruder Alarms
 - CCTV and Video Monitoring
 - Intercom System
- **Fire Alarm System**
- **Lift System**
- **Public Address System**
- **Home Automation System**
- **SMATV (Satellite Master Antenna Television)**
- **Audio Visual / Conferencing System**





Microwave Backhaul

XMT provides high capacity wireless transmission solutions for Gigabit-class wireless point-to-point (connection between two nodes or endpoints) and point-to-multipoint (or broadcast connection, where many nodes can receive information transmitted by one node) backhaul connectivity for:

- **Oil and Gas**
- **Service Providers**
- **Private Networks**
- **Government**

With our advanced high capacity IP network solutions comes our first hand assistance - turnkey network solutions, network design & capacity planning, RF Planning & feasibility report, and high quality transmission equipment - to enable you a comprehensive and smooth service deployment.





Electronic Document Management System (EDMS)

With the ever increasing amount of documents received and produced daily by organisations in many forms – hardcopy, text, audios, videos, graphics, and application files, it is an ongoing challenge to store, organise, retrieve, search, secure, and share such documents across many people with different levels of access rights. An EDMS is a software system which effectively and efficiently manage the organisation, storage, and access large volumes of different kinds of documents. Includes:

- **Information Rights Management**
- **Information Redaction**
- **Enterprise Capture**
- **Version Control**
- **Archive Management**
- **Workflow Management**



The background is a dark blue gradient. Overlaid on this are several light blue lines that form a complex, interconnected grid or circuit-like pattern. These lines are composed of horizontal and vertical segments. At various points where these lines intersect or terminate, there are small, solid blue circles of uniform size. The overall effect is a high-tech, digital, or architectural aesthetic.

KEY PROJECTS

KEY PROJECTS



DUKE2 Highway

Ekovest

Design & Install Traffic Control & Surveillance System (TCSS) –Automatic Vehicle Detection System (AVDS), Variable Message Sign (VMS), Emergency Telephone System (ETS), Communications

Access Control System

Prasarana

Design, Install & Configure Access Control System



Server, PCs, Notebooks, Printers

MRT, KPOC

Server, PCs, Notebooks and Printers on long term lease and support

Data Centre

Permodalan MARA Berhad

Design, Install, Test & Commission ICT facilities for PMB Data Centre



KEY PROJECTS



Virtualization DRC

Pahang State

Install, Test and Commission Virtualization Hardware and Software for Data Recovery Centre

The Astaka

Astaka Padu

Design & install Integrated Security Management System (ISMS) (Digital Network Video, CCTV, Card Access, IP Video Intercom, Central Alarm Monitoring) for the twin 70 storey luxury condominiums



Public & Private WiFi

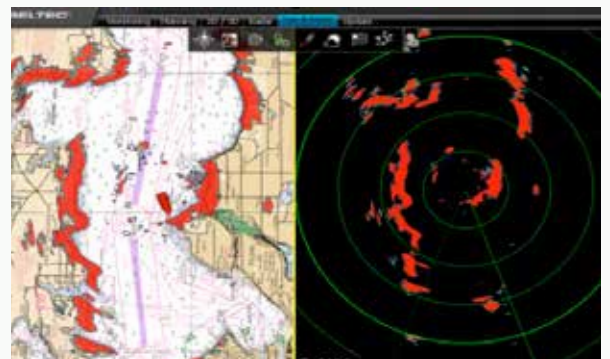
KL Sentral, ICLIF, SMECorp

Design & operate Public WiFi for KL Sentral CBD and provide WiFi to ICLIF & SMECorp on rental/lease basis

AIS / Radar Systems

SapuraKencana Petroleum

Design & Install Safety & Security, Anti-Collision & Anti-Intrusion Systems (AIS) radar for offshore platform



KEY PROJECTS



QSentral

Quill Construction

Design & Install Building Management and ICT systems

PM329 East Piatu

Newfield (Sapura Kencana)

Design & Install Telecommunications, Radio, Security, Weather Monitoring, Non Directional Beacons, Satellite & Entertainment Systems



Data Centres

Platinum Sentral & Plaza Sentral

Develop & operate common data centres for Colocation, PaaS, IaaS, SaaS as part of Green Building initiatives

Nu Sentral & 1Sentrum

MRCB & Pelaburan Hartanah

Design & install Telecommunications, ELV, Building Automation System (BAS), Structured Cabling and Integrated Security Management System (ISMS)



KEY PROJECTS



Platinum Sentral

MRCB

Project management of Malaysia's 1st Platinum-rated Green Building. Design & Install Intelligent Building Management System (IBMS), ELV (CCTV, Card Access, Turnstile, PA, Comms), Data Centre, Digital Signage, Digital Power Meter, Rainwater Harvesting and Solar Panel Systems

Shell Tower

GTC Global

Design & Install IBMS, Extra Low Voltage, Telecommunications and Integrated Security Management Systems (ISMS)



Menara SME Corp

SME Corp

Design & Install Audio Visual (AV), Boardroom PA & Entertainment Systems

Eastern Dispersal Expressway

MRCB

Design & Install Toll Collection System (TCS) and Traffic Control & Surveillance System (TCSS) & Automatic Number Plate Recognition (ANPR)



KEY PROJECTS



DUKE Highway (TCS & TCSS) *Ekovest*

Design & Install Toll Collection System (TCS) and
Traffic Control & Surveillance System (TCSS)

STAR LRT (Ampang Line) *Prasarana Malaysia*

Design & Install Fibre Optic Network System
upgrade to support Ticketing, Video and
Communications



TNB SDH *Tenaga Nasional*

Upgrade Fibre Optic Network System connecting
TNB's 90 substations nationwide

MSC One-Stop Centre *Malaysia Digital Economy Corporation*

Manage and operate the 1st MSC (M) Cyber Centre
in KL Sentral for MDEC



KEY PROJECTS



Permai Psychiatric Hospital MRCB

Design & Install ICT & Security Systems for the Permai Psychiatric Hospital, Johor Bahru

SCADA-EMS *Sabah Electric*

Design, Develop, Install, Test and Commission SCADA and Energy Management System for Sabah State Load Dispatch Centre (400km East-West grid)



CRM System MRCB

Customer Relationship Management System use by all MRCB department and subsidiaries

Storage Area Network *UKM Hospital*

Design, Install, Supply, Test and Commission UKM Hospital Storage Area Network for sharing of information and data



KEY PROJECTS



In-Building Cellular System *20 buildings nationwide*

Design & Install in-building cellular/mobile coverage systems on turnkey basis for Celcom, Maxis, Digi for malls and office towers nationwide

IT Security *University Putra Malaysia*

Supply, Install, Test & Commission Top Layer Attack Mitigator device for IT Department



SAP e-Inventory *Telekom Malaysia*

Design, Develop, Install, Test and Commission SAP e-Inventory system

EG-HRMIS *Government of Malaysia*

Provide IT Professionals for the development of Electronic Government Human Resource Management System



OUR CLIENTS

XMT's reputation is built on developing close relationships with our clients across a wide spectrum of public and private sectors, both locally and abroad.

We have helped some of the world's leading brands fortify their businesses with our Information and Communications Technology (ICT) & Telecommunications Services, Managed ICT Services, and Managed Infrastructure ICT products and services.





XMT TECHNOLOGIES SDN. BHD. (531914-T)

Suite 2A-17-2, Plaza Sentral
Jalan Stesen Sentral 5, KL Sentral
50470 Kuala Lumpur, Malaysia

Phone : +603 2773 5600
Fax : +603 2780 5700
Website : www.xmt.com.my
Email : info@xmt.com.my