



# BRIDGING THE FUTURE

Delivering reliable, safe, green and sustainable world class solutions



# EXECUTIVE CHAIRMAN'S MESSAGE

“In a world where technology is rapidly changing, XMT, as one of the leading telecommunications and ICT companies, is committed to provide creative, quality, and cost-effective solutions for your organisation.

XMT is progressing from a nascent limb of one of Malaysia's leading conglomerates to an independent industry leader since 2000. With our experience, we will continue to deliver reliable, safe, green and world-class solutions to ensure efficiency, growth, and sustainability.

In the ever-competitive business environment, we will take on the responsibility to align our innovative solutions to meet your organisational priorities. To do so, we will always be reinventing ourselves so as to be your preferred technology enabler.

After all, our vision is bridging the future.

**DATO' RAMLI KALAM**  
EXECUTIVE CHAIRMAN



# ABOUT US



**Date Incorporated :** 14 November 2000  
**Authorised Capital:** RM 10 Million  
**Paid-up Capital :** RM 6.5 Million  
**Banks :** Bank Islam, Maybank, RHB Islamic, SME Bank  
**Auditor :** Wan Nadzir & Co.  
**Tax Agent :** PricewaterhouseCoopers (PwC)

**XMT TECHNOLOGIES SDN. BHD. (531914-T)**

Suite 2A-3-1, Plaza Sentral  
Jalan Stesen Sentral 5, KL Sentral  
50470 Kuala Lumpur, Malaysia

**T** +603 2773 5600  
**F** +603 2780 5700  
**W** [www.xmt.com.my](http://www.xmt.com.my)  
**E** [info@xmt.com.my](mailto:info@xmt.com.my)

## OUR MANAGEMENT

<b>Executive Chairman</b>	:	<b>Dato' Ramli Kalam</b>
<b>Director</b>	:	<b>Mohd Fareez Ramli</b>
<b>Director</b>	:	<b>Arjun Arasu</b>
<b>Head of Finance</b>	:	<b>Siti Zainorah Zainal Abidin</b>
<b>Head of Business Development</b>	:	<b>Ku Hasniza Hani Ku Hashim</b>
<b>Head of Human Resources</b>	:	<b>Rafedah Mohd Ramli</b>



# OUR CREDENTIALS

**BRIDGING THE FUTURE is what we do**

The focus of XMT includes Information and Communications Technology (ICT) & Telecommunications Services, Managed ICT Services, and Managed Infrastructure ICT. We have the resources and the capabilities to undertake projects of all sizes, while our professional project teams ensure the quality, timeliness and cost effectiveness in project deliveries.

We are members in good standing with these various organisations as we have one aim in mind – to deliver projects, ensuring you and your business operate efficiently and compete effectively with products and services of the highest reliability, security, and efficiency.



**BUMIPUTERA**



**ASP, NFP & NSP**



**G7**



**MINISTRY OF WORKS**

**BPKU**



**ISO 9001**



**ISO 27001: 2013  
Cert. No.: 774877**



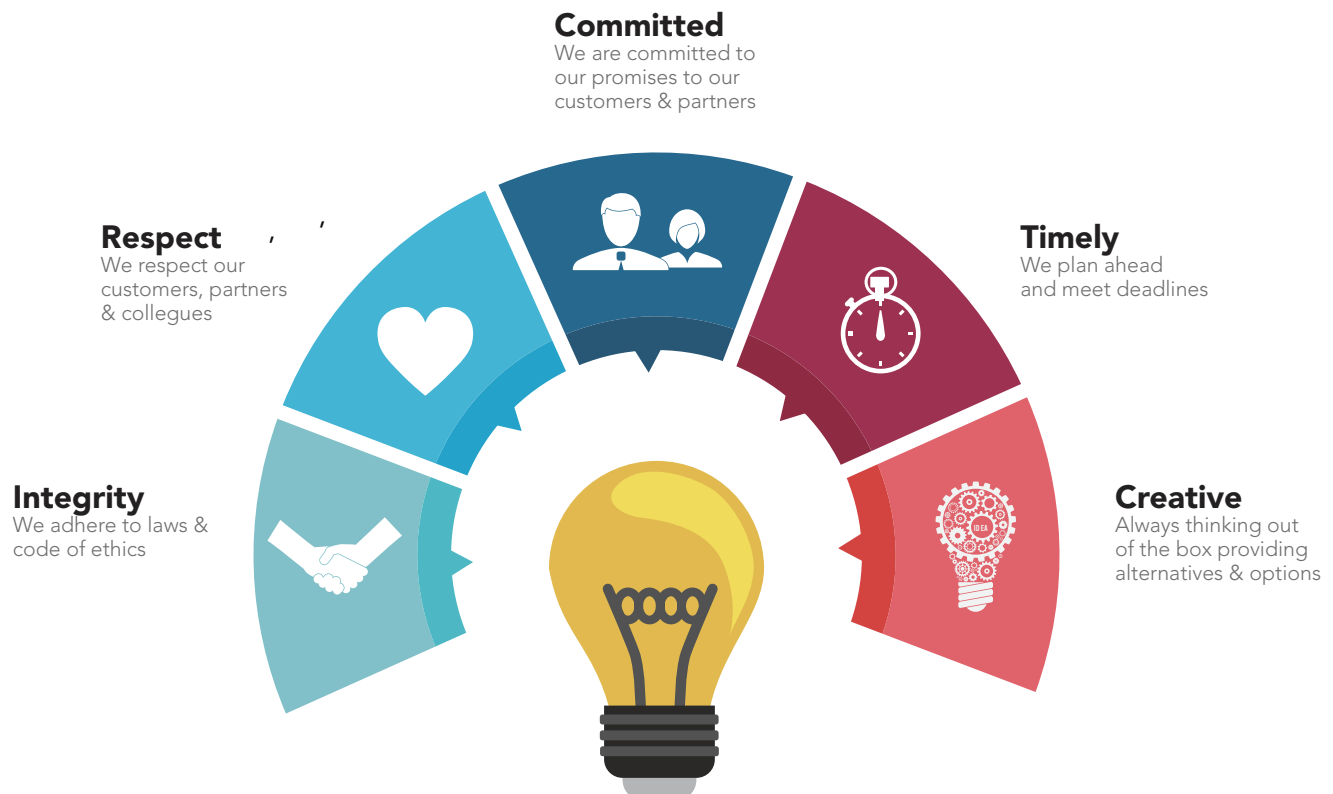
# OUR VISION

Bridging the Future

# OUR MISSION

To be the preferred technology enabler  
delivering reliable, safe, green and sustainable  
world-class solutions

# OUR CORE VALUES



The background is a dark blue gradient. Overlaid on this are several light blue lines that form a complex, interconnected network. These lines are mostly horizontal and vertical, with some diagonal segments, creating a grid-like but irregular pattern. At various points where lines intersect or terminate, there are small, solid blue circles. The overall effect is reminiscent of a circuit board, a data network, or a molecular structure.

# OUR SOLUTIONS & PRODUCTS



# OUR SOLUTIONS & PRODUCTS



## COMMUNICATIONS

Empowering you to effectively control your business using our high quality, reliable and secure communications solutions

## INFRASTRUCTURE ICT

Providing intelligent buildings, highways, railways with future proof, cost effective, and state of the art technologies



## ICT SERVICES

Equipping your business with Information and Communications Technology and Telecommunications services to ensure you stay competitive in today's digitally charged marketplace





# Managed Communications Services

XMT empowers your business with ICT and Telecommunications services to ensure you stay competitive in today's digitally charged marketplace. XMT offers:

- **Dedicated Internet Access**
- **Managed LAN and WAN**
- **Managed Unified Communication**
- **Managed Fiber**
- **Managed Data Centre – IaaS, PaaS, SaaS**
- **Cloud Services**
- **24x7x365 Technical Support**

With the perpetually evolving telecommunications landscape, XMT's managed services portfolio is developed to provide you with a wide range of managed services model that are in line with the rapid transformation of the global telecommunication demands and needs. XMT has set their sights on not just managing technology and networks but on managing service performance and ultimately your experience.

We deliver to you, via our Xkomm Managed Services, our ongoing management, monitoring and maintenance of your IT networks hence securing your ICT & Telecommunications assets.







# Traffic Control and Surveillance System (TCSS)

For effective traffic management, XMT delivers the most comprehensive and extensive TCSS platform which includes traffic management, monitoring, data analysis and control activities.

To maximize the capacity of road network and enhance road safety, XMT makes available the deployment of an advanced, operational TCSS system to overcome complexities in traffic operations and management in both routine and emergency cases.

For complete TCSS, XMT offers:

- **Traffic Control System (TCS)**
  - Variable Message Signs (VMS)
  - Highway Information System (HIS)
- **Traffic Information System (TIS)**
- **Automatic Number Plate Recognition System (ANPR)**
- **Automatic Vehicle Detection System (AVDS)**
- **Closed-Circuit Television (CCTV)**
- **Traffic Monitoring System (TMS)**
- **Emergency Telephone System (ETS)**





# Integrated Security Management System (ISMS)

Integrated Security Management System (ISMS) is state of the art software modular in design and flexible for future expansion. It integrates all security components permitting programmed control and information gathering. ISMS provides the daily operation platform for operators, maintenance, security and safety.

Integrated Security Management Systems shall include the following subsystems such as:

- **Security System**
- **Access Control System (ACS)**
- **Intruder Alarms System (IAS)**
- **CCTV and Video Monitoring (CCTV)**
- **Intercom System (IS)**
- **Perimeter Intrusion Detection System (PIDS)**
- **Panic Alarm System**
- **Guard Tour System**
- **Biometrics System**
- **Facial Recognition**
- **Crowd Control**





# Integrated Building Management Systems (IBMS)

We provide fully Integrated Building Management System (IBMS), incorporating distributed control and standard open communication networks. The integrated systems include controls and monitoring of each building/room/apartment.

- **Building Management**
  - Building Automation
  - Lighting Controls
  - Consumption Measurements
- **Security System**
  - Access Control
  - Intruder Alarms
  - CCTV and Video Monitoring
  - Intercom System
- **Fire Alarm System**
- **Lift System**
- **Public Address System**
- **Home Automation System**
- **SMATV (Satellite Master Antenna Television)**
- **Audio Visual / Conferencing System**





# Microwave Backhaul

XMT provides high capacity wireless transmission solutions for Gigabit-class wireless point-to-point (connection between two nodes or endpoints) and point-to-multipoint (or broadcast connection, where many nodes can receive information transmitted by one node) backhaul connectivity for:

- **Oil and Gas**
- **Service Providers**
- **Private Networks**
- **Government**

With our advanced high capacity IP network solutions comes our first hand assistance - turnkey network solutions, network design & capacity planning, RF Planning & feasibility report, and high quality transmission equipment - to enable you a comprehensive and smooth service deployment.





The background is a dark blue gradient. Overlaid on this are several light blue lines that form a complex, interconnected network. These lines are composed of horizontal, vertical, and diagonal segments, creating a grid-like structure with various sized squares and rectangles. At several points along these lines, there are small, solid light blue circles, which appear to be nodes or junctions in the network. The overall effect is a high-tech, digital, or architectural aesthetic.

# KEY PROJECTS

# KEY PROJECTS



## DUKE2 Highway

*Ekovest*

Design & Install Traffic Control & Surveillance System (TCSS) –Automatic Vehicle Detection System (AVDS), Variable Message Sign (VMS), Emergency Telephone System (ETS), Communications

## Access Control System

*Prasarana*

Design, Install & Configure Access Control System



## In Building Coverage Systems

*20 buildings nationwide*

Design & Install in-building cellular/mobile coverage systems on turnkey basis for Celcom, Maxis, Digi for malls and office towers nationwide

## Data Centre

*Permodalan MARA Berhad*

Design, Install, Test & Commission ICT facilities for PMB Data Centre



# KEY PROJECTS



## Virtualization DRC

### *Pahang State*

Install, Test and Commission Virtualization Hardware and Software for Data Recovery Centre

## The Astaka

### *Astaka Padu*

Design & install Integrated Security Management System (ISMS) (Digital Network Video, CCTV, Card Access, IP Video Intercom, Central Alarm Monitoring) for the twin 70 storey luxury condominiums



## Public & Private WiFi

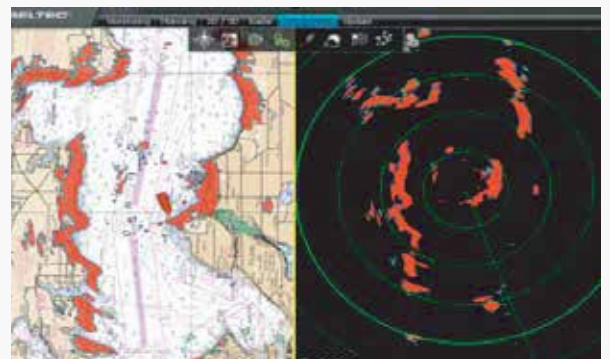
### *KL Sentral, ICLIF, SMECorp*

Design & operate Public WiFi for KL Sentral CBD and provide WiFi to ICLIF & SMECorp on rental/ lease basis

## AIS / Radar Systems

### *SapuraKencana Petroleum*

Design & Install Safety & Security, Anti-Collision & Anti-Intrusion Systems (AIS) radar for offshore platform



# KEY PROJECTS



## QSentral

### *Quill Construction*

Design & Install Building Management and ICT systems

## PM329 East Piatu

### *Newfield (Sapura Kencana)*

Design & Install Telecommunications, Radio, Security, Weather Monitoring, Non Directional Beacons, Satellite & Entertainment Systems



## Data Centres

### *Platinum Sentral & Plaza Sentral*

Develop & operate common data centres for Colocation, PaaS, IaaS, SaaS as part of Green Building initiatives

## Nu Sentral & 1Sentrum

### *MRCB & Pelaburan Hartanah*

Design & install Telecommunications, ELV, Building Automation System (BAS), Structured Cabling and Integrated Security Management System (ISMS)





# KEY PROJECTS



## Platinum Sentral

### MRCB

Project management of Malaysia's 1st Platinum-rated Green Building. Design & Install Intelligent Building Management System (IBMS), ELV (CCTV, Card Access, Turnstile, PA, Comms), Data Centre, Digital Signage, Digital Power Meter, Rainwater Harvesting and Solar Panel Systems

## Shell Tower

### GTC Global

Design & Install IBMS, Extra Low Voltage, Telecommunications and Integrated Security Management Systems (ISMS)



## Menara SME Corp

### SME Corp

Design & Install Audio Visual (AV), Boardroom PA & Entertainment Systems

## Eastern Dispersal Expressway

### MRCB

Design & Install Toll Collection System (TCS) and Traffic Control & Surveillance System (TCSS) & Automatic Number Plate Recognition (ANPR)



# OUR CLIENTS

XMT's reputation is built on developing close relationships with our clients across a wide spectrum of public and private sectors, both locally and abroad.

We have helped some of the world's leading brands fortify their businesses with our Information and Communications Technology (ICT) & Telecommunications Services, Managed ICT Services, and Managed Infrastructure ICT products and services.





